



**GRANT N°:** 871153  
**PROJECT ACRONYME :** JERICOS3  
**PROJECT NAME :** Joint European Research Infrastructure for Coastal Observatories - Science, services, sustainability  
**COORDINATOR :** Laurent DELAUNEY - Ifremer, France - jerico-s3@ifremer.fr

<b>JERICOS3 MILESTONE</b>	
Joint European Research Infrastructure network for Coastal Observatory <b>Science, Services, Sustainability</b>	
<b>MS#, WP# and full title</b>	JERICOS3 MS.48 - WP9 - "Chapter 1 of D9.4: Proposed organisational and governance scenarios"
<b>5 Key words</b>	governance; sustainability; services; ontology; structure
<b>Lead beneficiary</b>	Ifremer
<b>Lead Author</b>	Alexandre Epinoux
<b>Co-authors</b>	Lucie Cocquempot, Laurent Delauney
<b>Contributors</b>	
<b>Submission date</b>	13.12.2023

→ Please specify the type of milestone:

- Report after a workshop or a meeting (TEMPLATE A)
- Report after a specific action (TEMPLATE B) (test, diagnostic, implementation,...)
- Document (TEMPLATE B) (guidelines,...)
- Other (TEMPLATE B) (to specify) .....

<b>Diffusion list</b>			
<u>Consortium beneficiaries</u>	Third parties	Associated Partners	other
X			

**PROPRIETARY RIGHTS STATEMENT**

THIS DOCUMENT CONTAINS INFORMATION, WHICH IS PROPRIETARY TO THE **JERICOS3** CONSORTIUM. NEITHER THIS DOCUMENT NOR THE INFORMATION CONTAINED HEREIN SHALL BE USED, DUPLICATED OR COMMUNICATED EXCEPT WITH THE PRIOR WRITTEN CONSENT OF THE **JERICOS3** COORDINATOR.

*According to the Regulation (EU) 2016/679 of the European Parliament and of the Council of 27 April 2016 on the protection of natural persons with regard to the processing of personal data and on the free movement of such data, and repealing Directive 95/46/EC (General Data Protection Regulation) and the 78-17 modified law of 6 January 1978, you have a right of access, rectification, erasure of your personal data and a right of restriction to the data processing. You can exercise your rights before the Ifremer data protection officer by mail at the following address: IFREMER – Délégué à la protection des données- Centre Bretagne – ZI de la Pointe du Diable – CS 10070 – 29280 Plouzané - FRANCE or by email: [dpo@ifremer.fr](mailto:dpo@ifremer.fr) // [jerico@ifremer.fr](mailto:jerico@ifremer.fr)*

*Ifremer shall not hold your personal data for longer than necessary with regard to the purpose of the data processing and shall destroy it thereafter.*





## TABLE OF CONTENT

<b>1. Objectives</b>	<b>3</b>
<b>2. Ontology</b>	<b>3</b>
<b>3. Governance principles</b>	<b>4</b>
<b>4. Conclusion</b>	<b>5</b>

## 1. Objectives

The main objective of this milestone is to provide a first overview of the envisioned organisation and governance mechanisms that will be put in place for JERICO-RI. An first version of the ontology that will be used in JERICO-RI is also presented, focused on governance topics. Governance mechanisms will be defined in more detail in D9.4 (“Proposed organisation, structure, and long-term governance”).

## 2. Ontology

**Governance:** the system by which an organisation makes and implements decisions to achieve its goals.

**Assembly of members:** one representative from each Member State (the national delegate) that may be accompanied by one or more advisors. The national delegate is appointed by the Member State. (Members state and Member terms should be defined).

**Scientific, Technical and Ethical Advisory Committee (AC):** a collegial body appointed according to specific rules to provide advice to JERICO’s governing bodies. The AC is an independent body. The AC is appointed by the Assembly of members following the proposal of the ExCo.

**Director General:** the legally responsible Head of JERICO-RI appointed by the Assembly of Members for a fixed period.

**Executive Committee:** a collegial body including the Nation Infrastructure Representative elected from their national peers, according to specific rules + Offices managers, for the operation and management of the JERICO-RI

**Office:** performs the managerial function of planning, organizing, directing and controlling (An office can be distributed or centralized;

**Central Management Office:** performs the administrative functions of JERICO-RI (legal, contract, financial accounting, HR, etc)

**Expert Center:** a group of experts responsible for discussion and strategy within some specific key scientific or technological domains, needed for activities and the generation and operation of specific centers. An expert center can be virtual or physical.

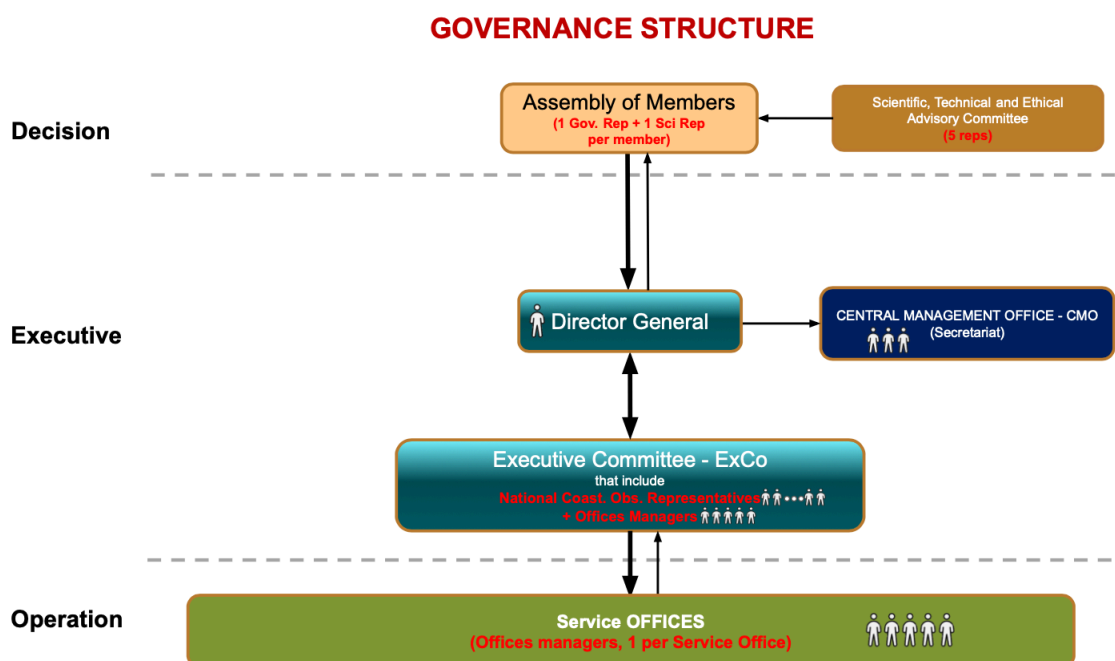
**Services:** actions and activities carried out for the benefit of targeted users and providing assistance to these users. They can be internal if addressing internal needs of the JERICO-RI or external when addressing JERICO-RI external users’ needs.

## 3. Governance principles

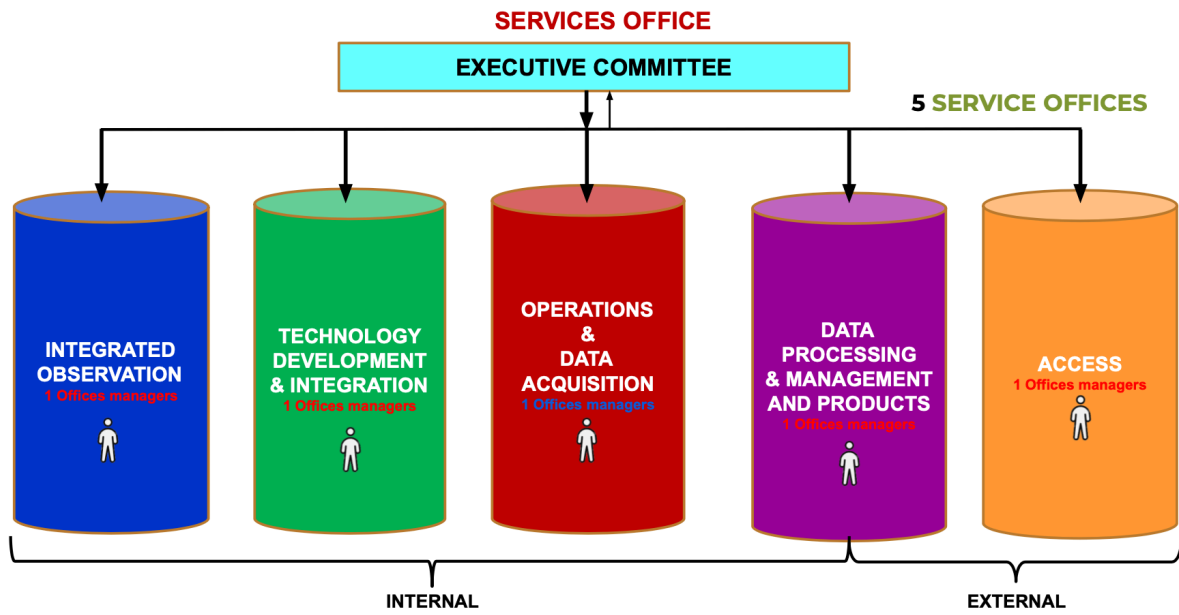
The highest level of governance in JERICO-RI will be the Assembly of Members who have the ultimate decision making powers of JERICO-RI. The Assembly of Members will be advised by the Scientific, Technical and Ethical Advisory Committee of independent experts.

The Director General will report to the Assembly of Members on the strategic, scientific, legal, financial and operational aspects of JERICO-RI. The Director General will be supported in these activities by the JERICO-RI Central Management Office which performs the administrative functions of JERICO-RI (legal & contract, financial accounting, HR services, etc).

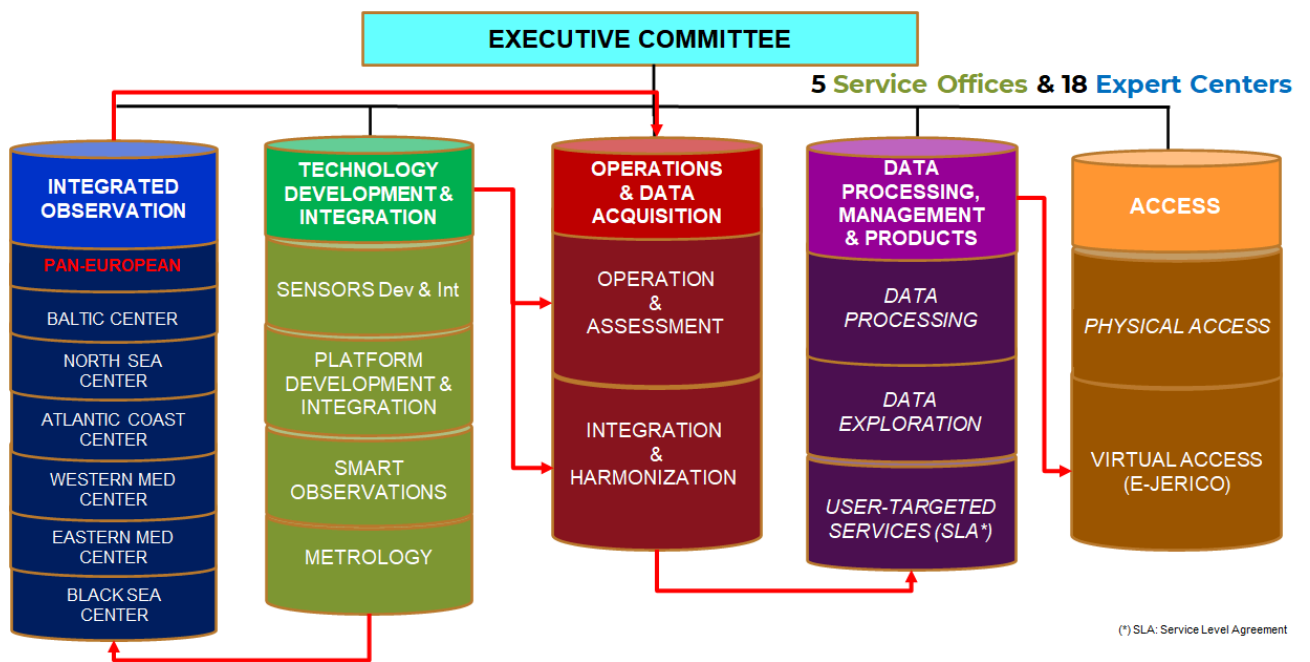
The Executive Committee will be responsible for the operation and management of JERICO-RI and report to the Director General. The Executive Committee will also be supported by the Central Management Office. The operations and management of JERICO-RI that the Executive Committee are responsible for are the Offices providing the JERICO-RI Services. The Executive Committee has the power to establish or discontinue an Office subject to the agreement of the Assembly of Members. The Executive Committee will be composed of one "Head of Country" delegate appointed by each Member State and one delegate elected from each Office.



Each Services Office will consist of one or more Expert Centers. Each Services Office has the power to establish or discontinue an Expert Center under its control subject to the agreement of the Executive Committee. Each Office will elect one delegate to the Executive Committee from amongst its membership to represent the Office's interests.



Each Expert Center will provide one or more Services. Each Expert Center has the power to establish or discontinue a Service subject to the agreement of the relevant Office.



(\*) SLA: Service Level Agreement

#### 4. Conclusion

Ultimately JERICO-RI will be governed at the highest level by the Member States that have joined JERICO-RI:



1. Each Member State appoints a national delegate to the Assembly of Members.
2. It is proposed that each Member State appoints one “Head of Country” delegate as its country’s representative to the JERICO-RI Executive Committee.
3. It is proposed that each Member State also appoints at least one delegate to each Office.

The governance system that each Member States adopts internally is a matter for each individual Member State. However, regional specificities within JERICO-RI will need to be considered and, if decided upon, specific governance mechanisms suitable for allowing these specificities will have to be designed.